



*With apologies to U2

I still haven't found what I'm looking for*:
Reflections on 10+ years of providing
library orientation & instruction to a
Business English Bridging Program



May 11, 2017 ABEL Meeting Lightning Talk

Linda Lowry, Business & Economics Liaison Librarian,
Brock University, St. Catharines, ON

What is the Business English Bridging Program?

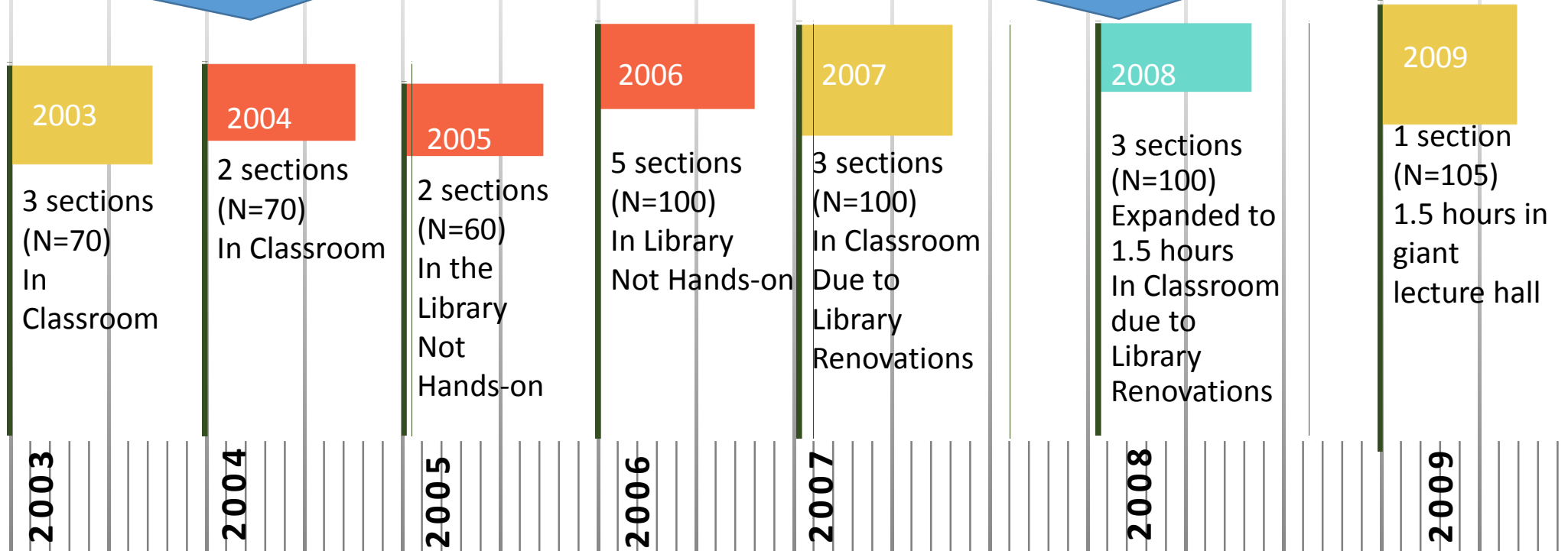


- First offered in 2003
- Mandatory 4 week session in August for incoming students in MBA & MACC International Student Pathway (ISP) Programs
- Orientation to Brock University facilities & services
- Business English instruction
- Social Activities

BE Program Timeline & Reflections

Library Orientation via 1 hr lecture to often jetlagged learners (PPT, Handouts, Brief Live Demos)

More class time to demo business databases, discuss search strategies, & review citation styles & Refworks.



BE Program Timeline & Reflections

New Library Computer Classroom allows for Hands-on Learning (yay!) but large # of sections = Librarian Burnout!

Business School hires a Student Communication Skills Coordinator – asks me to focus on identifying, evaluating, & citing academic & business sources.

Reinstated hands-on workshops in 2016

2010

6 X 1 hr hands-on workshops (N=120)
Not enough time!

2010

2011

8 X 2 hr hands-on workshops (N=160)
Enough time but laryngitis set in by 8th workshop!

2011

2012

Revert back to 1 hr lecture to large group (N=180)

2012

2013

4 X 1 hr lectures in classroom (N=195)

2013

2014

I am on sabbatical - colleague gives 1 large group lecture (N~200)

2014

2015

1 hr lecture (N=200)

I create an Orientation LibGuide to “Flip the Classroom” but students did not review guide prior to my session.

2015

2016

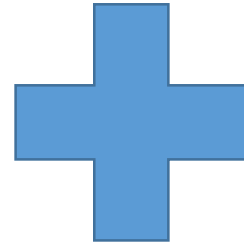
Back to 1 hr Orientation lecture to large group (N=225) and 5 X 1 hr hands-on Library Research workshops in classrooms (on student laptops)

2016

The Problem: Reliance on a Face-to-face Instructional Model



Increasing Enrollments



One Business Librarian



Limited Opportunity for Active/Hands-on Learning
Not Sustainable & Not Scalable

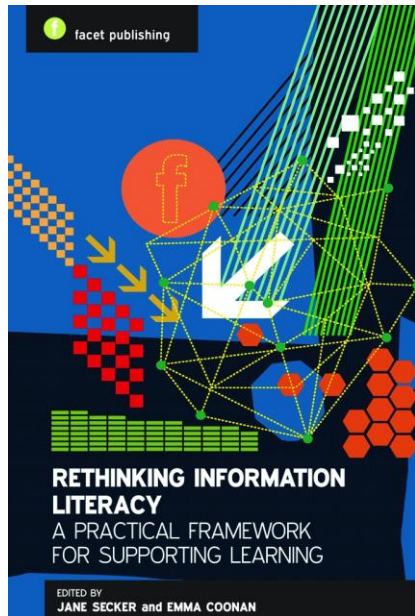
The Solution: Online Instruction Modules



Brock University
Library Just
Subscribed to
LibWizard
(Springshare)

- Create learning objects that can be recycled in other contexts
 - Virtual Library Tour
 - Business Information Literacy Modules
- Add assessment pieces
 - Survey of prior library & research experience
 - Pre-test
 - Post-test

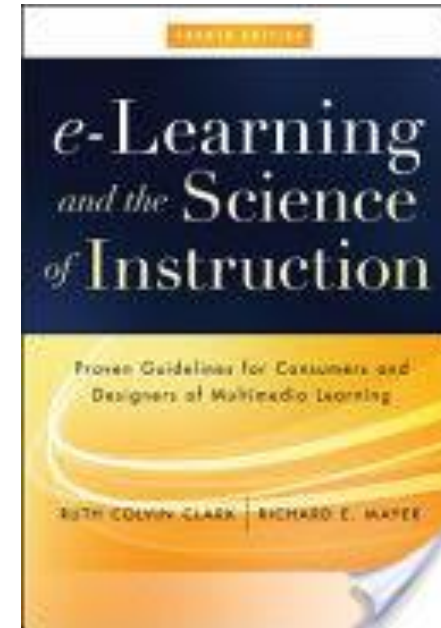
The Challenge: Rethinking ILI Models



- Making transition to UK (~CDN) higher education
- Model IL curriculum includes academic literacy



- Library & L2 Learning Perspectives: Affect, Scaffolding, Social Learning, Self-directed Learning



- Evidence-based design principles: Multimedia, Contiguity, Modality, Redundancy, Coherence, Personalization, Segmenting & Pre-training



Have I found the instructional
model I'm looking for?
Ask me at ABEL 2018!

(Or email me in September:
lhowry@brocku.ca)